

# LCMS Report

## Sample Information

LCMS

Acquired by : System Administrator  
Sample Name : Nitrotetrazolium Blue chloride-01  
Method File : B 5%-95%-P-new - 2.6min.lcm

Date Acquired : 2021/6/29 9:50:22

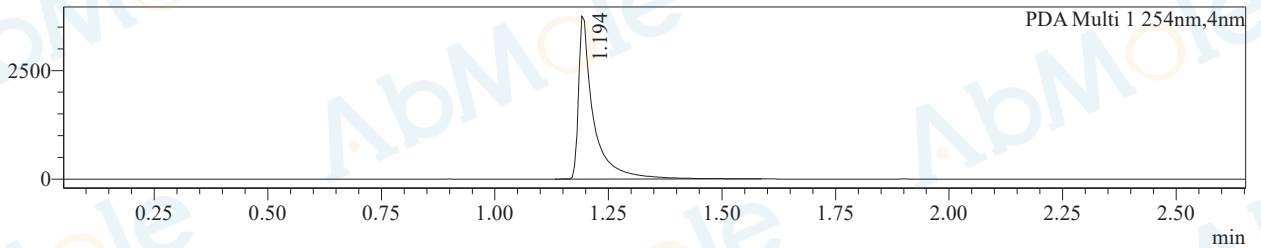
Injection Volume : 1

Vial : 54

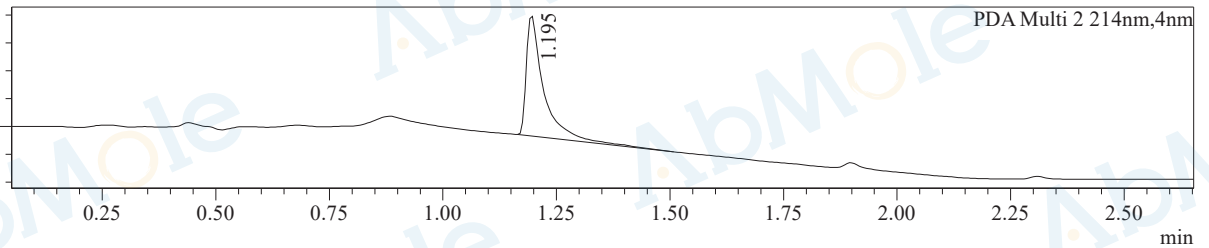
Column : Waters SunFire C18 50\*4.6mm 5um 2.000ml/min 2.6min  
Pump A : 0.1% FA and 10% ACN in H2O  
Pump B : 0.1% FA and 10% H2O in ACN

## Chromatogram

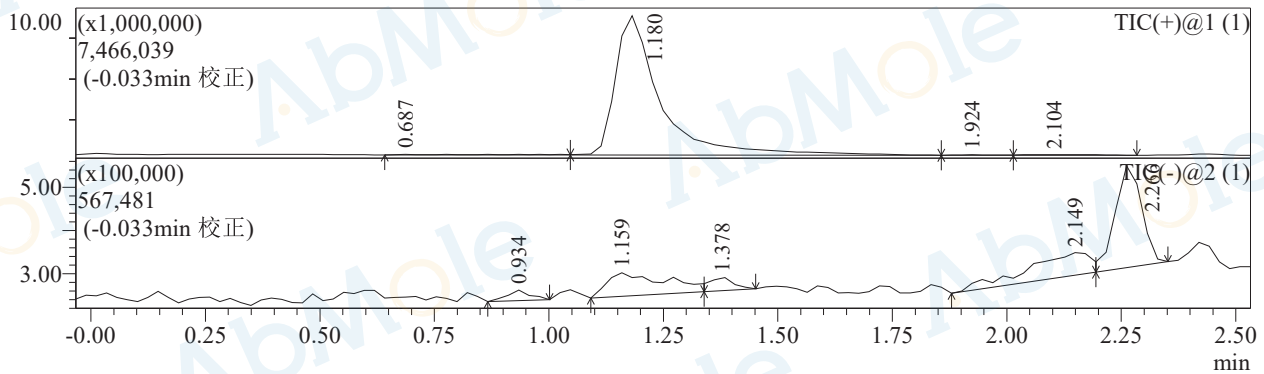
mAU



mAU



段号1



## Integration Results for DAD

### PDA Ch1 254nm

Peak#	Ret. Time	Height	Area	Area%
1	1.194	3751231	8554068	100.000
总计		3751231	8554068	100.000

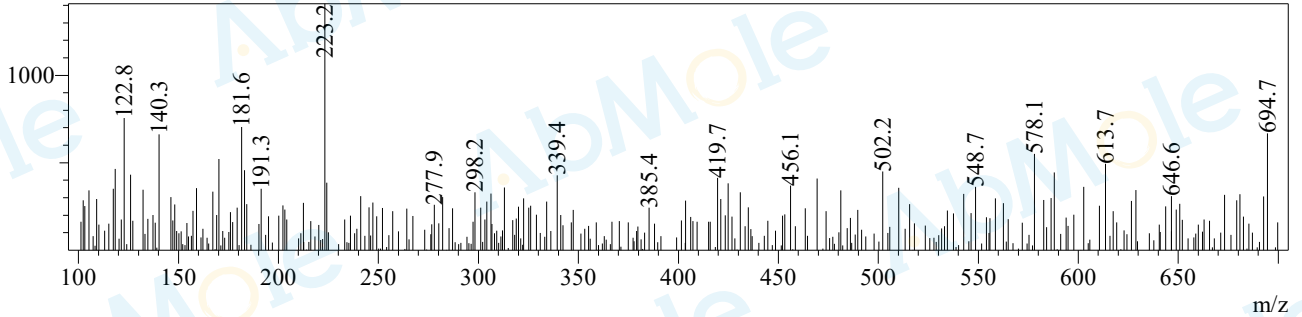
### PDA Ch2 214nm

Peak#	Ret. Time	Height	Area	Area%
1	1.195	2151993	5750985	100.000

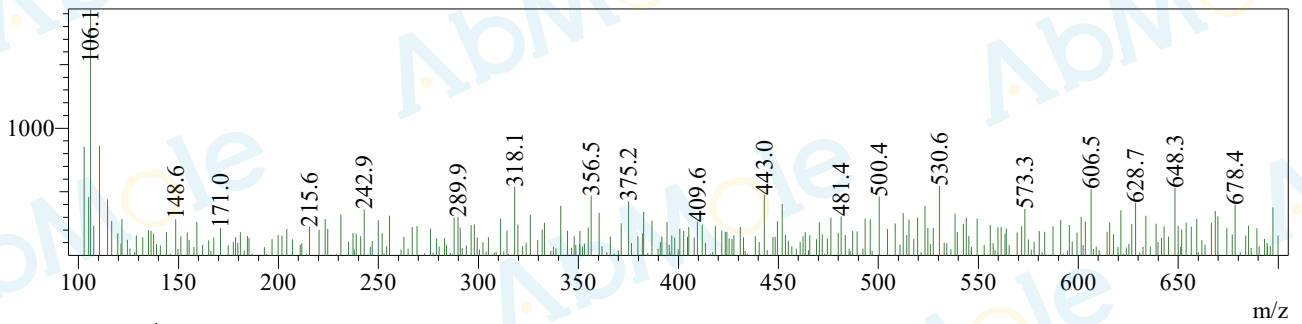
Peak#	Ret. Time	Height	Area	Area%
总计		2151993	5750985	100.000

### Mass Spectrum

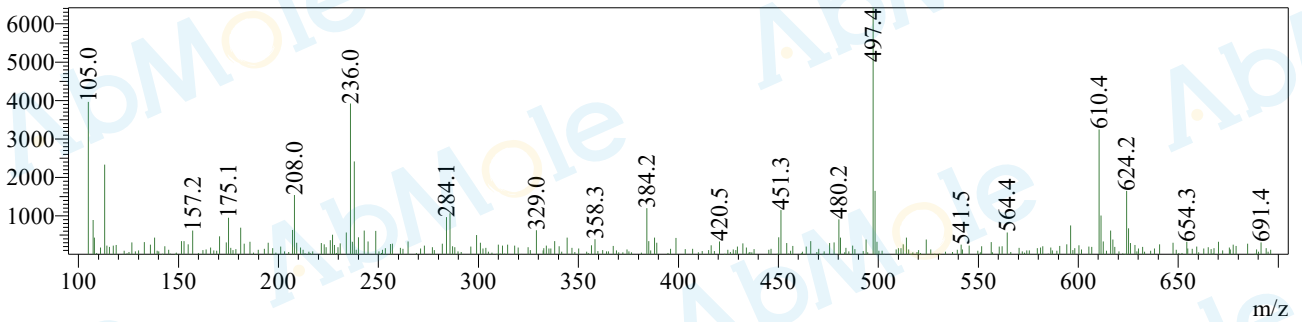
Rt=0.687min 正



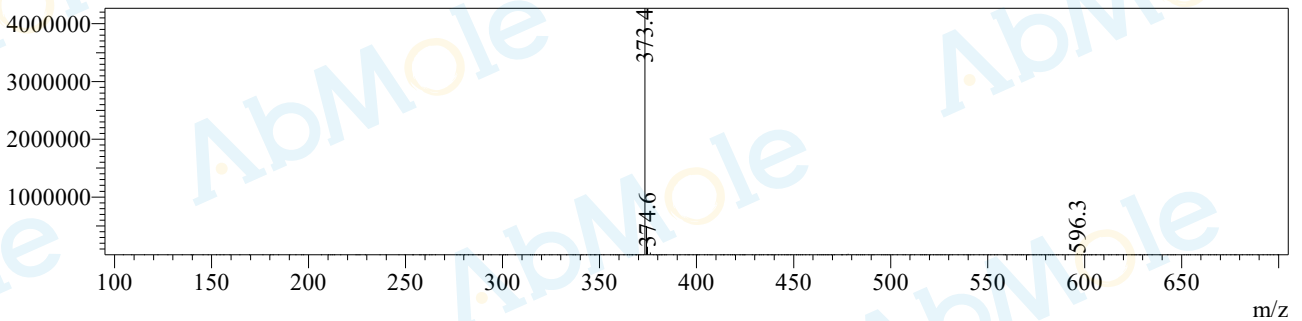
Rt=0.940min 负



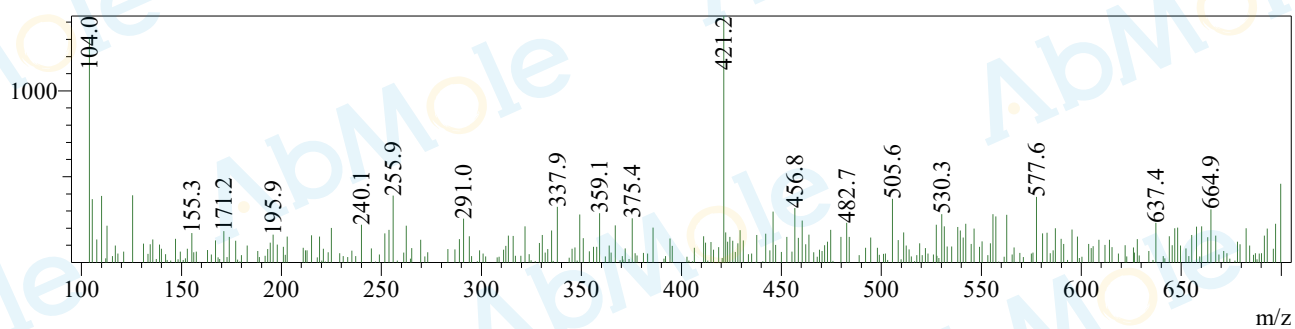
Rt=1.165min 负



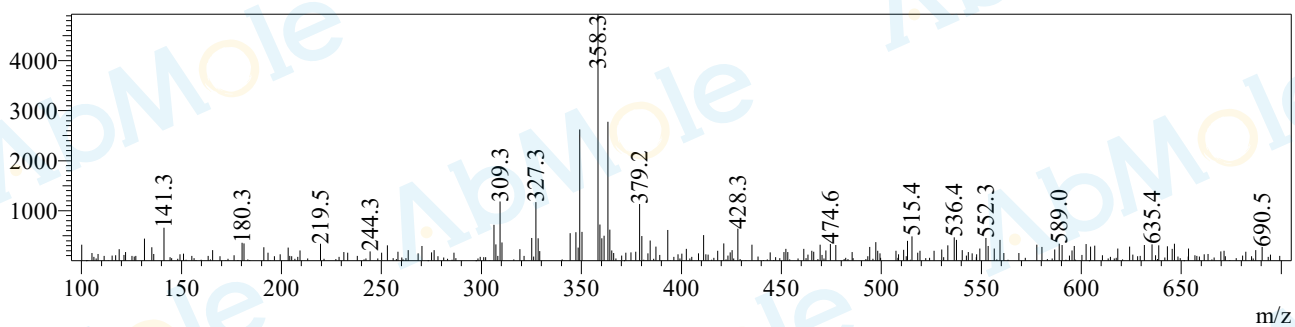
Rt=1.159min 正



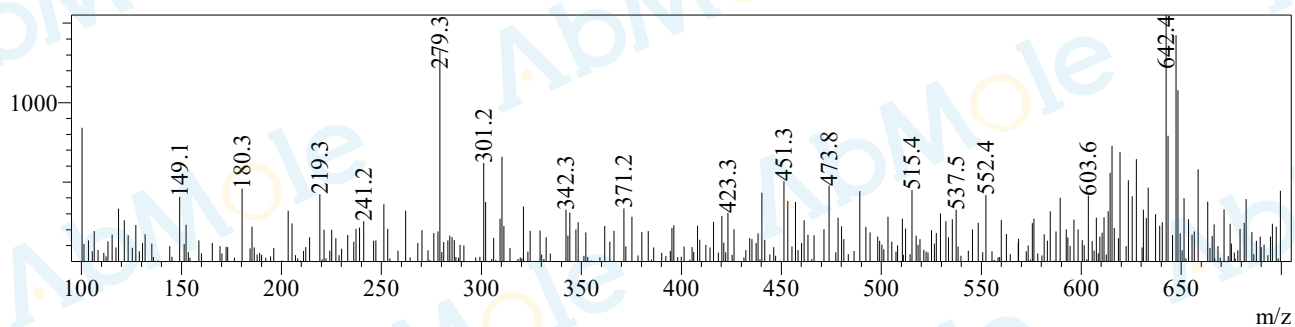
Rt=1.367min 负



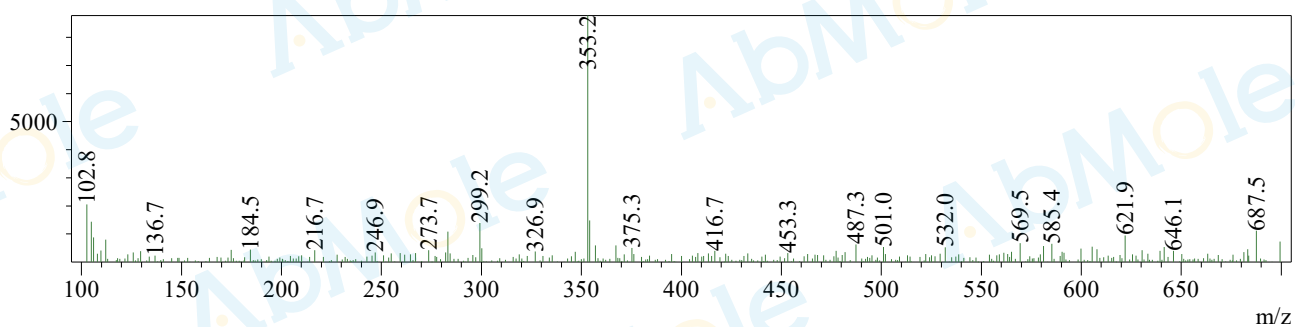
Rt=1.924min 正



Rt=2.082min 正



Rt=2.155min 负



Rt=2.267min 负

